



20ft offshore container



10ft half height offshore container



20ft half height offshore container



6*6*8 mini offshore container



Offshore small IBU container



waste skip



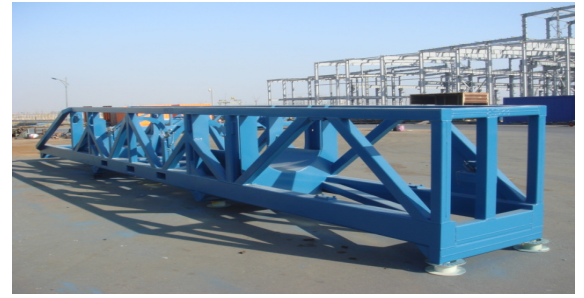
Offshore container



10ft offshore container



Offshore Basket container



offshore basket container



Waste skip



open top container



Waste skip



300 Gallon offshore tank



4000 Liter Offshore tank



1000 Gallon offshore tank



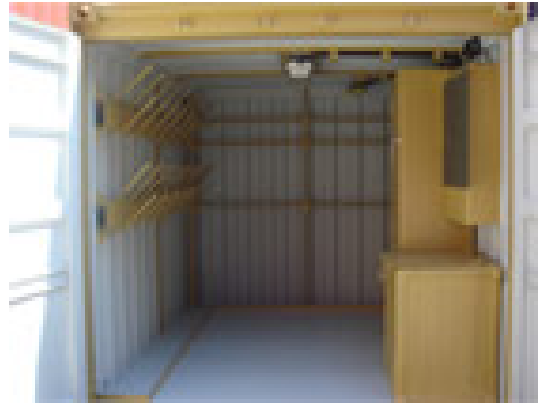
IBC tank carrier



10' side open container



Work-shop container



Work-shop container



Work-shop container

Container produced by CIMC



mini container (8'x6'x8'/6'x6'x9')



20'x8'x9'6" offshore container



6.1m basket

Container produced by CIMC



13.1m basket



20' half height open top container with side door



8.1m basket



14.1m basket

Container produced by CIMC



18.1m basket



Container for services bin



7.3M HEAVY LIFT HALF HEIGHT OPENTOP OFFSHORE CONTAINER

Container produced by CIMC



10' container with galvanized frame



Drilling cutting box with galvanized surface



10' half height container with galvanized surface



Mini container with galvanized surface



Waste skip (with Aluminum Lid)
Drilling cutting box



2500 Liter portable tank (IMDG T11)



500 Gallon offshore tank (IMDG T7)



2900 Liter helifuel offshore tank (IMDG T4)



4600 Liters Horizontal offshore tank (IMDG T7)



2700 Liters Horizontal offshore tank (IMDG T7)

550 加仑 IBC 近海框架 PLT-430 型号 (MODEL NO.) :
550 GAL IBC OFFSHORE FRAME PLT-430

SPECIFICATIONS 技术规范



| CLASSIFICATION | | Dimensions | UNIT | |
|-------------------------|--------|------------|------|-------|
| External 箱 外 | Length | 长度 | 1500 | mm |
| | Width | 宽度 | 1160 | mm |
| | Height | 高度 | 2350 | mm |
| Max. Capacity (Nominal) | | 最大名义容积 | 2082 | Litre |
| Max. Filling capacity | | 最大充灌容积 | 2040 | Litre |
| Max. Gross Mass | | 最大总重 | 5000 | Kg |
| Tare Mass (Nominal) | | 自重(名义) | 550 | Kg |
| Max. Payload | | 最大载重 | 4450 | Kg |

SPECIAL FEATURES 特点

- FRAME** Design and test Standard: DNV2.7-1,EN12079,
IBCs Design and test Standard: IMDG.
- IBCs** Test pressure: 2bar.
- Frame** design temperature: -20°C; **IBCs** Tank shell design temperature: -40°C~50°C.
- Material: **IBCs** Tank—304; **Frame**—SPA-H,Q345D; Seal gasket—EPDM.
- Finish: **IBCs** TANK: Internal and external tank surface:2B. **Frame**: Painting.
- Fittings:Discharge valve :2 " ball valve.



5000 升立式近海罐柜 PLT-412 (MODEL NO.) : 0 GT 007
 5000L OFFSHORE PORTABLE TANK PLT-430

SPECIFICATIONS 技术规范



| CLASSIFICATION | | Dimensions | UNIT | |
|-------------------------|--------|------------|-------|-------|
| External 箱 外 | Length | 长度 | 2300 | mm |
| | Width | 宽度 | 2300 | mm |
| | Height | 高度 | 2560 | mm |
| Max. Capacity (Nominal) | | 最大名义容积 | 5000 | Litre |
| Max. Filling capacity | | 最大充灌容积 | 4750 | Litre |
| Max. Gross Mass | | 最大总重 | 10000 | Kg |
| Tare Mass (Nominal) | | 自重(名义) | 2450 | Kg |
| Max. Payload | | 最大载重 | 7550 | Kg |

SPECIAL FEATURES 特点

1. Design and test Standard: DNV2.7-1, EN12079, IMDG CODE T7, ASME VIII Div 1, ADR/RID .
2. Design pressure: 2.67bar, Test pressure: 4bar.
3. Frame design temperature: -20° C; Tank shell design temperature: -40° C~50° C
4. Material: Tank—316L; Frame—SPA-H, Q345D; Seal gasket—PTFE outer encapsulating EPDM inner.
5. Bolt connection between the Tank and Frame.
6. Finish: TANK: Internal and external tank surface: normal state of the hot-rolled steel plate (according to ASTM A480 NO.1). Frame: Painting.
7. Fittings:
 Relief valve: 2 1/2" P/V valve c/w cowl; Discharge valve :3"-2 "; 1 x 500mm、6 point hinged manlid c/w swingbolts; Air vent valve: 1 1/2" ball valve; PVC Document box; 1 1/2" Dipstick valve. Inlet Valve: 1x2.5" Bsp Cap.
 Option: Lifting Set. Level gauge.

